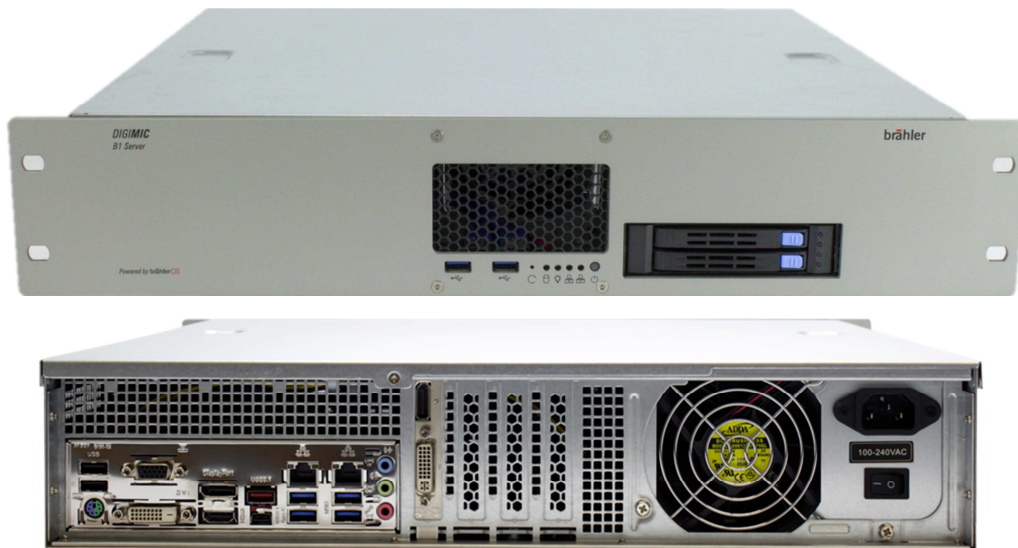


brählerOS B1 Server

Computer for *DIGIMIC* Conference Systems

Article no.: 07.3680



Description

A complete conference system from a single source - Brähler Systems makes this possible with the new BrählerOS B1 Server.

Pre-installed software makes the use of the computer particularly fast and efficient. The complete conference solution brählerOS is already pre-installed and configured. With DCen Config and DANTE Controller you have full control over your conference system. The BrählerOS B1 Server also features the Brähler Support Tool. For you, this means fast help without a long journey - simply via the Internet.

Multiple network ports provide large network bandwidth. SupportTool, conference system and multimedia units, for example, work in different, separate networks.

The BrählerOS B1 Server works with the operating system Windows Server 2016 from Microsoft. Mouse, keyboard and monitor are not included.

Features

- Fast deployment due to pre-installed software:
 - BrählerOS
 - DCen ConfigTool
 - DANTE Controller
 - Brähler Support Tool
- Microsoft Windows Server 2016
- Intel Quad-Core 3.6 GHz
- 16 GB RAM, 500 GB RAID 1 SSD
- additional backup HDD 2 TB
- DVI, DP monitor connector
- min. 2x LAN RJ45

Power supply

- 100 – 240 VAC
- 50-60 Hz

Housing

- 19", 2 RU, aluminium,
- Front: "grey" lacquered
- Back: "Silver" anodized
- WxHxD: approx. 457x88x430 in mm
approx. 18.0x3.5x17.0 inch
(without mounting bracket)
- weight: approx. 15,2 kg

System requirements

Required central units

- DCen
Article no.: 05.0010
- or
- DCen32
Article no.: 05.0050
- or
- DCen mini
Article no.: 05.0410
- or
- DCen32 mini
Article no.: 05.0420

System components

The BrählerOS B1 Server is compatible with all devices of the DIGIMIC family.

System software

The software components of the BrählerOS series are pre-installed on the BrählerOS B1 server. In order to be able to use these, you need the appropriate license keys.